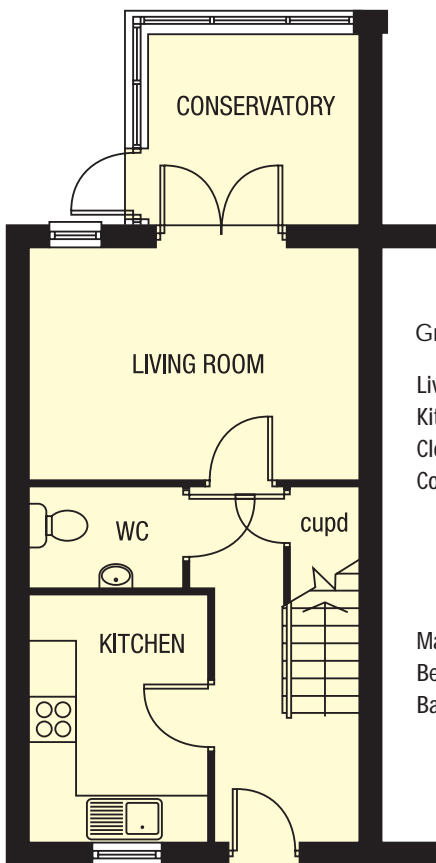




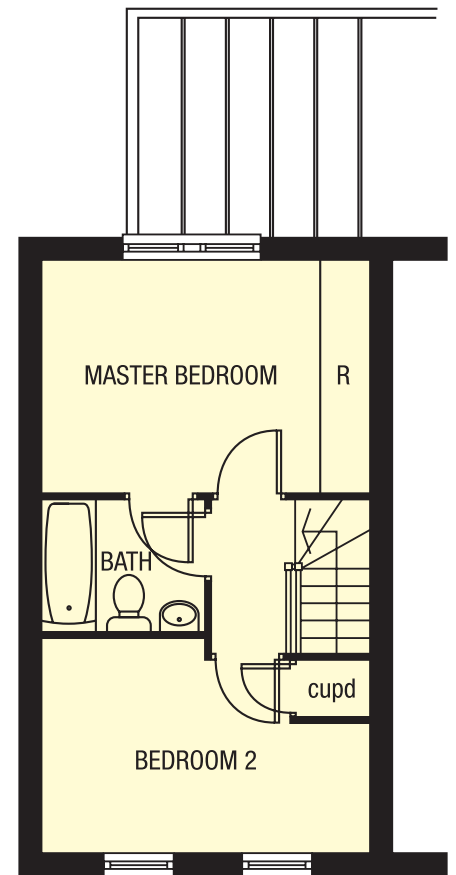
# the dunham

2 BEDROOM HOME



Ground Floor not to scale

Living Room: 4.300m x 3.010m  
 Kitchen: 3.200m x 2.325m  
 Cloaks: 2.000m x 1.300m  
 Conservatory: 2.700m x 2.500m



First Floor not to scale

Master Bedroom: 4.300m x 3.010m  
 Bedroom 2: 4.300m x 2.775m  
 Bathroom: 2.100m x 1.725m

N.B. All dimensions shown are maximum structural dimensions and do not include plaster finish.

Illustration above shows an artist's impression of a typical Dunham house. Seddon Homes pursue a policy of continuous improvement. So whilst every effort has been made to ensure that this information is correct, it is intended only as a guide and the company reserve the right to alter the specification as necessary and without prior notice. Please note that the layout of some homes may be the reverse of that shown here. Specific properties may also differ from this illustration in respect of window positioning, brick colour and other design details, so please check with the Sales Advisor if clarification is required. This does not constitute or form any part of a contract or sale.