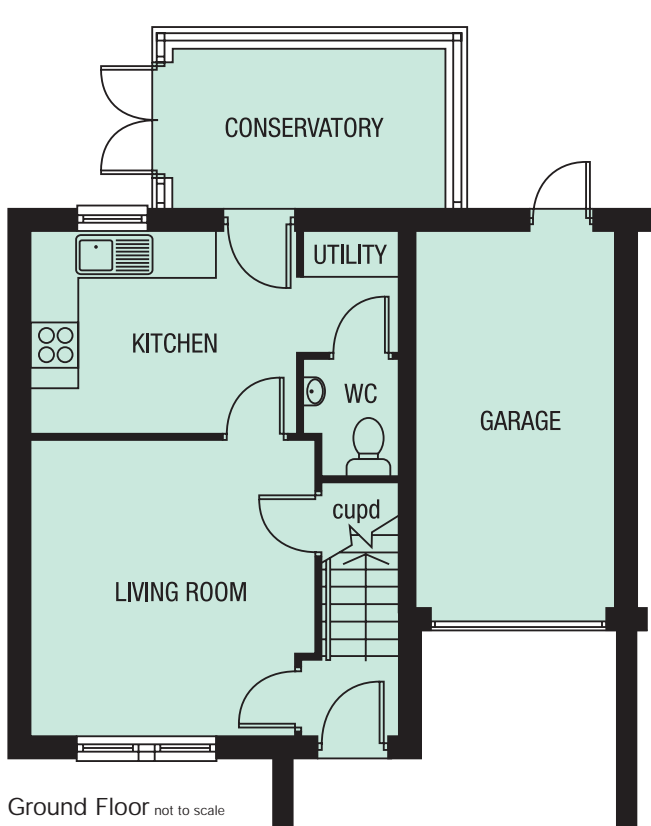




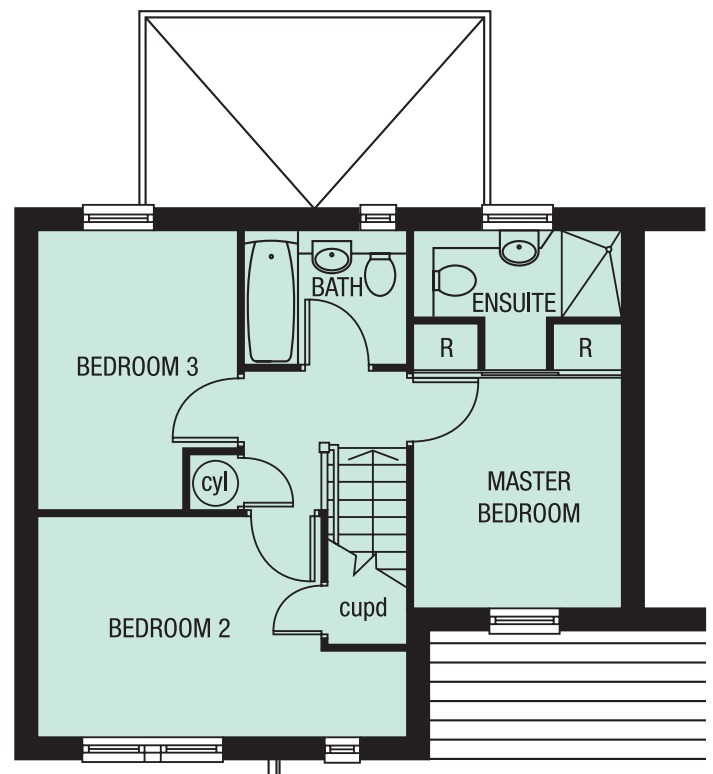
# the elworth

3 BEDROOM HOME



Ground Floor not to scale

Living Room:	3.860m x 3.425m (min)
Kitchen:	3.435m x 2.625m
Utility:	1.255m x 1.550m
Cloaks:	1.255m x 1.500m (max)
Conservatory:	3.500m x 2.050m
Garage	2.595m x 4.898m



First Floor not to scale

Master Bedroom:	2.912m x 3.650m (max, including wardrobes)
Ensuite:	2.912m x 1.115m
Bedroom 2:	4.785m x 2.860m (max)
Bedroom 3:	3.625m x 2.595m
Bathroom:	2.100m x 1.725m

N.B. All dimensions shown are maximum structural dimensions and do not include plaster finish.

Illustration above shows an artist's impression of a typical Elworth house. Seddon Homes pursue a policy of continuous improvement. So whilst every effort has been made to ensure that this information is correct, it is intended only as a guide and the company reserve the right to alter the specification as necessary and without prior notice. Please note that the layout of some homes may be the reverse of that shown here. Specific properties may also differ from this illustration in respect of window positioning, brick colour and other design details, so please check with the Sales Advisor if clarification is required. This does not constitute or form any part of a contract or sale.