

Seddon Homes News Release

11th February 2011

Reach for your dream home at St George's Rise, Malpas

Seddon Homes is offering a helping hand to potential buyers looking to secure a property at a distinctive housing development in the heart of a Cheshire village.

Called 'Reach', the innovative offer consists of three elements designed to make life easier for anyone hoping to snap up one of the remaining properties at St George's Rise. Potential buyers can:

- Receive £750 towards legal fees;
- Find the best mortgage option for them with an independent financial advisor (IFA); and
- Part exchange their current home.

Built using a mellow, rustic brick, the traditional architectural style on display at St George's Rise is completely in keeping with existing properties in Malpas.

Each home has a garage and front and rear turfed gardens. Inside, quality SieMatic kitchens feature Bosch appliances.

Six of the properties are detached family-sized homes offering either four or five bedrooms. The remaining two are semi-detached homes with two bedrooms – perfect for first-time buyers, young couples or single occupancy.

Denis Maddock, Sales and Marketing Director at Seddon Homes, said: "This package is all about reassuring and reaching out to potential buyers who want to move to their dream home but are perhaps slightly daunted about presently moving.

"By giving our customers impartial access to an independent financial advisor, we will enable them to find the most suitable mortgage deal and work out a plan that is affordable for them.

"Contributing £750 to a buyer's legal fees will ease the financial burden, while part-exchange will remove the stress and uncertainty that comes with being trapped in a chain and needing to sell your existing home first."

Denis also added "With two bed prices starting at £175,000 and 5 beds starting at £350,000, St George's Rise offers a realistically affordable and unrivalled prospect for potential buyers seeking rural charm whilst retaining a contemporary lifestyle.

"Anyone moving here will benefit from the best of two worlds; the chance to enjoy country life, coupled with easy access to Nantwich, Whitchurch Chester, and Wrexham.

St George's Rise boasts two show homes which showcases to full effect the opportunity for buyers to enjoy practical but stylish modern homes in a rural village setting. These are available to view Friday to Monday from 10am – 5pm. No appointments are necessary.



Seddon Homes
.co.uk

Please contact:

Outwrite Public Relations
Belgravia House
Grosvenor Street
Mold, Flintshire
CH7 1EJ

Tel: 01352 706260

Fax: 01352 706266

info@outwrite.co.uk

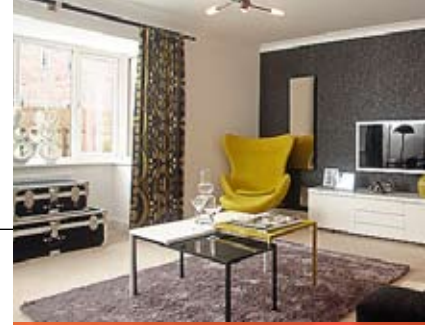
Seddon Homes News Release

For further information call Caroline Mentiplay on 01948 861123, email stgeorgesrise@seddonhomes.co.uk or visit www.seddonhomes.co.uk

Follow St George's Rise on Twitter @ www.twitter.com/stgeorgesrise for regular updates.

Ends

For more information, please contact Outwrite Public Relations on 01352 706260.



Seddon Homes
.co.uk

Please contact:

Outwrite Public Relations
Belgravia House
Grosvenor Street
Mold, Flintshire
CH7 1EJ

Tel: 01352 706260

Fax: 01352 706266

info@outwrite.co.uk