

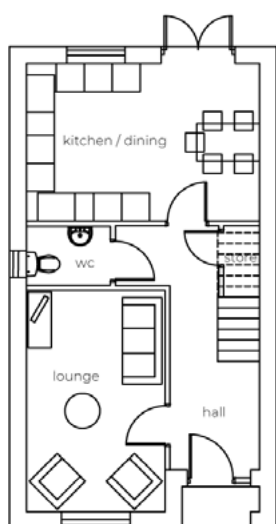
The Avenham

3 bedroom semi detached/detached house with parking spaces *(side bay to some plots)*



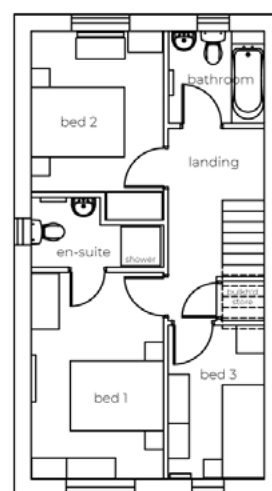
Seddon Homes.co.uk

Ground floor



Lounge	9'10" x 15'7"
Kitchen/Dining Area	16'8" x 11'3"
WC	6'0" x 4'3"

First floor



Master Bedroom	9'6" x 14'8"
En Suite	9'6" x 5'1"
Bedroom 2	9'6" x 11'5"
Bedroom 3	6'10" x 11'0"
Bathroom	6'10" x 6'8"