

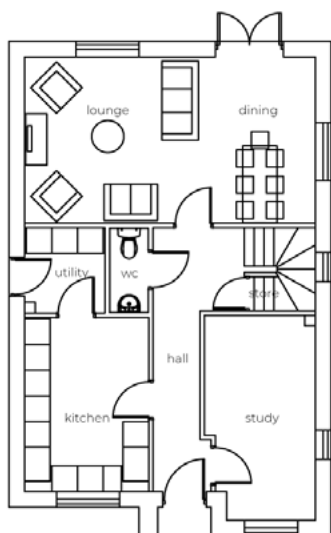
The Highfield

4 bedroom detached house with detached single garage/parking spaces



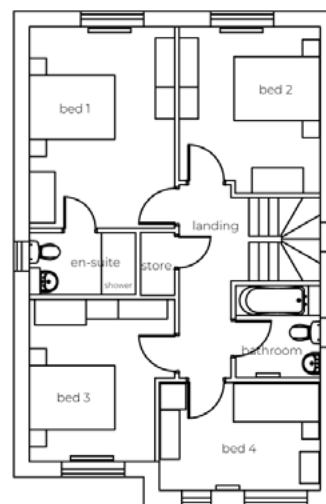
Seddon Homes.co.uk

Ground floor



Lounge/Dining Area	22'5" x 12'11"
Kitchen	9'8" x 13'6"
Study	6'9" x 15'9"
Utility	6'3" x 6'6"
WC	3'1" x 6'5"

First floor



Master Bedroom	11'7" x 15'7"
En Suite	8'1" x 4'9"
Bedroom 2	10'7" x 13'0"
Bedroom 3	11'7" x 12'7"
Bedroom 4	12'5" x 8'4"
Bathroom	6'8" x 7'0"