

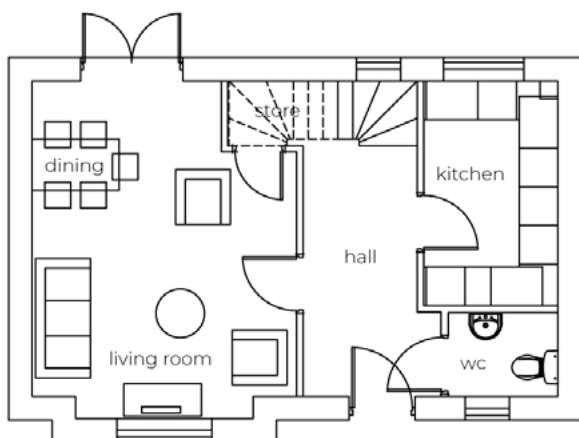
The Hyde

3 bedroom semi detached/detached house with parking spaces



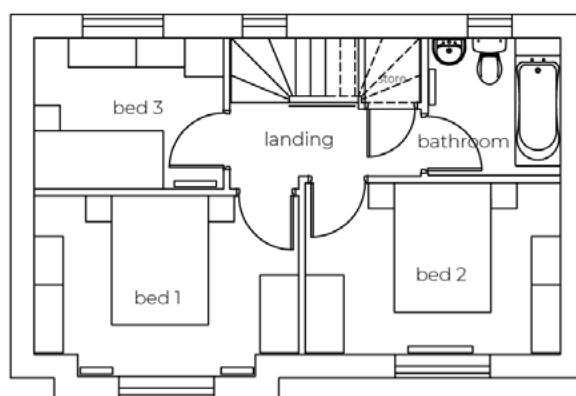
Seddon Homes.co.uk

Ground floor



Lounge/Dining Area	13'7" x 16'3"
Kitchen	6'11" x 11'6"
WC	5'9" x 4'5"

First floor



Master Bedroom	13'6" x 8'2"
Bedroom 2	13'1" x 8'10"
Bedroom 3	9'9" x 7'10"
Bathroom	6'11" x 7'1"