

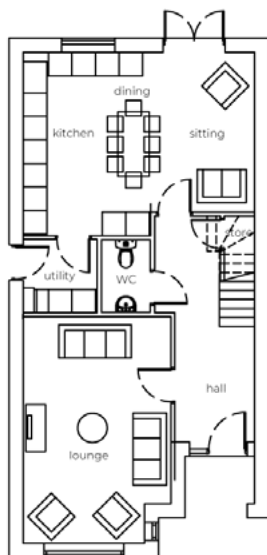
The Osterley

4 bedroom detached house with detached single garage



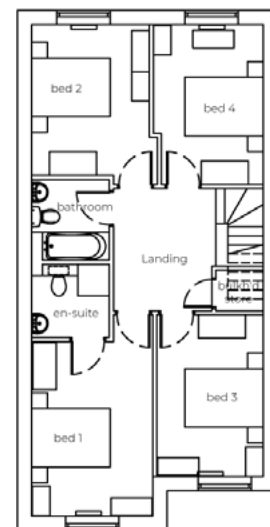
Seddon Homes.co.uk

Ground floor



Lounge	12'5" x 19'1"
Kitchen/Dining/Family Area	19'6" x 15'6"
Utility	6'3" x 6'2"
WC	4'2" x 6'2"

First floor



Master Bedroom	10'3" x 14'8"
En Suite	6'8" x 6'3"
Bedroom 2	10'7" x 12'8"
Bedroom 3	9'0" x 13'8"
Bedroom 4	9'3" x 13'5"
Bathroom	6'8" x 6'10"

All layouts are for illustrative purposes only and may differ by plot. Please speak to your Sales Advisor for more information.