

# The Marsden

4 bedroom detached house with detached double garage

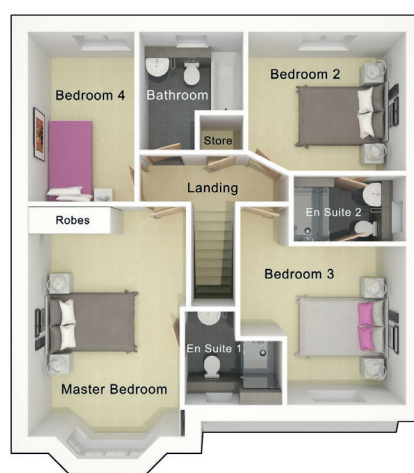


Ground floor



Lounge	3385mm x 5447mm
Kitchen/Family Area	8110mm x 3603mm
Study	1965mm x 2518mm
Utility	2518mm x 1730mm
WC	2518mm x 1075mm

First floor



Master Bedroom	3410mm x 5423mm
En Suite 1	2115mm x 1800mm
Bedroom 2	3570mm x 3420mm
En Suite 2	2429mm x 1431mm
Bedroom 3	3400mm x 2997mm
Bedroom 4	3652mm x 2305mm
Bathroom	2255mm x 2547mm

N.B. All dimensions shown are maximum structural dimensions and do not include plaster finish. CGI shows typical Marsden house. Seddon Homes pursues a policy of continuous improvement. So whilst every effort has been made to ensure that this information is correct, it is intended only as a guide and the company reserves the right to alter the specification as necessary and without prior notice. Please note that the layout of some homes may be the reverse of that shown here. Specific properties may also differ from this picture in respect of window positioning, brick colour and other design details including no garage, so please check with the Sales Advisor if clarification is required. This does not constitute or form any part of a contract or sale.

**Dukes Rise** Off Brandlesholme Road Bury Gtr Manchester BL8 1GW Tel: 01925 839504