

## The Chadkirk

Plots 30 & 31  
2 bedroom home

FREEHOLD  
Estimated service charge of £199 per annum



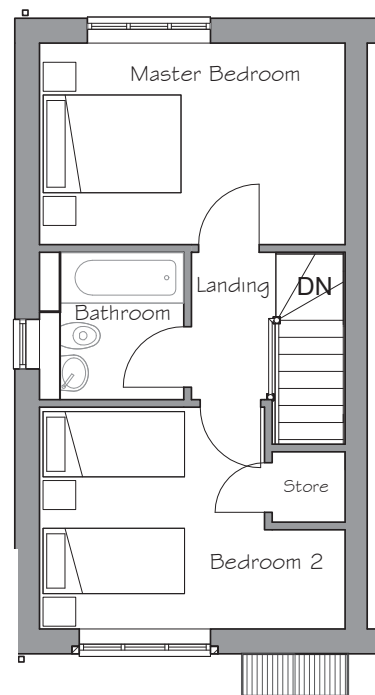
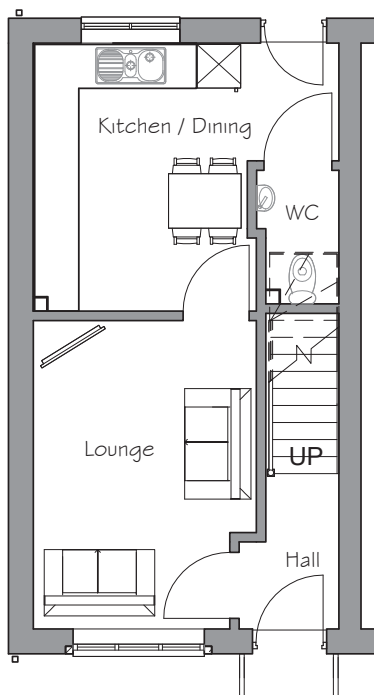
**£123,900**  
represents a 70%  
shared equity  
purchase.  
Full price £177,000  
T's & C's apply.  
Ask for details.

### Ground floor

Lounge	3106mm x 4283mm
Kitchen/Dining	2980mm x 3728mm
WC	1037mm x 873mm

### First floor

Master Bedroom	4243mm x 2811mm
Bedroom 2	4243mm x 3088mm
Bathroom	2019mm x 2062mm



N.B. All dimensions shown are maximum structural dimensions and do not include plaster finish. CGI shows a typical Chadkirk housetype.