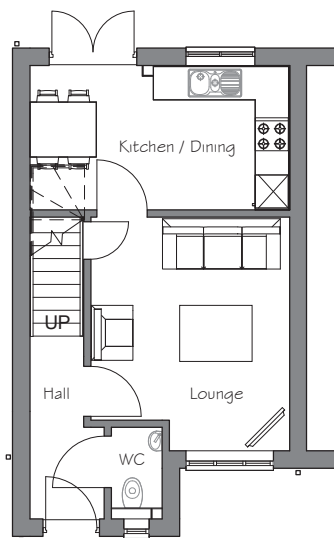


# The Ascot

3 bedroom semi-detached house with parking space

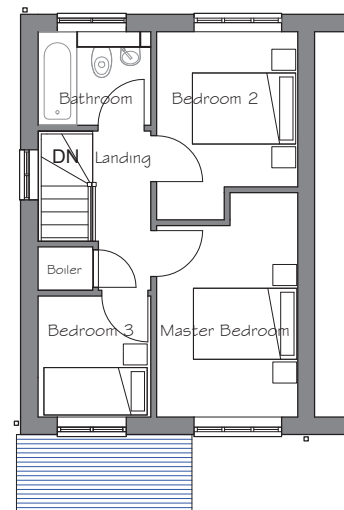


Ground floor



Lounge	3629mm x 4280mm
Kitchen/Dining	4731mm x 2655mm
WC	950mm x 1695mm

First floor



Master Bedroom	2586mm x 4110mm
Bedroom 2	2586mm x 2850mm
Bedroom 3	2070mm x 2230mm
Bathroom	2070mm x 1730mm

N.B. All dimensions shown are maximum structural dimensions and do not include plaster finish. CGI shows typical Ascot house. Seddon Homes pursues a policy of continuous improvement. So whilst every effort has been made to ensure that this information is correct, it is intended only as a guide and the company reserves the right to alter the specification as necessary and without prior notice. Please note that the layout of some homes may be the reverse of that shown here. Specific properties may also differ from this picture in respect of window positioning, brick colour and other design details including no garage, so please check with the Sales Advisor if clarification is required. This does not constitute or form any part of a contract or sale.

**Thornfield Grove** Sherbourne Road Middleton Manchester M24 6EH Tel: 01925 839504