

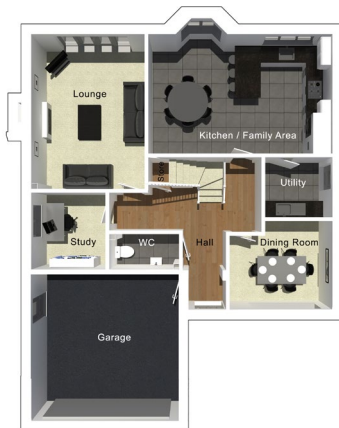
The Lytham

5 bedroom detached house with integral double garage



Seddon Homes.co.uk

Ground floor



Lounge	3916mm x 5325mm
Kitchen/Family Area	6344mm x 4113mm
Dining Room	3555mm x 3064mm
Study	2575mm x 2710mm
Utility	2335mm x 2068mm
WC	2423mm x 1290mm
Garage	5073mm x 5050mm

First floor



Master Bedroom	5073mm x 4065mm
Dressing Room	2163mm x 2458mm
En Suite 1	2860mm x 2587mm
Bedroom 2	4050mm x 3078mm
En Suite 2	2860mm x 1530mm
Bedroom 3	3730mm x 3750mm
Bedroom 4	2613mm x 4285mm
Bedroom 5	2430mm x 3078mm
Bathroom	2499mm x 2458mm

N.B. All dimensions shown are maximum structural dimensions and do not include plaster finish. CGI shows typical Lytham house. Seddon Homes pursues a policy of continuous improvement. So whilst every effort has been made to ensure that this information is correct, it is intended only as a guide and the company reserves the right to alter the specification as necessary and without prior notice. Please note that the layout of some homes may be the reverse of that shown here. Specific properties may also differ from this picture in respect of window positioning, brick colour and other design details including no garage, so please check with the Sales Advisor if clarification is required. This does not constitute or form any part of a contract or sale.

Campion Point Congleton Road Sandbach CW11 1DN Tel: 0845 456 9667