

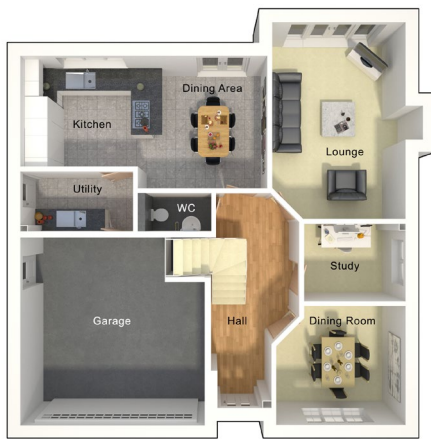
The Oakworth

5 bedroom detached house with integral double garage



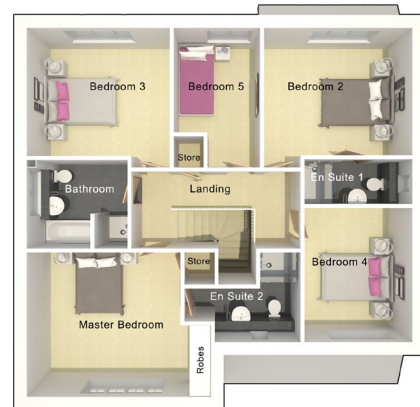
Seddon Homes.co.uk

Ground floor



Lounge	3610mm x 5300mm
Kitchen/Dining Area	6650mm x 3575mm
Dining Room	3498mm x 3210mm
Study	2750mm x 2100mm
Utility	3050mm x 1683mm
WC	2000mm x 1105mm
Garage	4960mm x 5030mm

First floor



Master Bedroom	4960mm x 3895mm
En Suite 1	3143mm x 2433mm
Bedroom 2	4005mm x 3445mm
En Suite 2	2922mm x 1230mm
Bedroom 3	3858mm x 3465mm
Bedroom 4	2922mm x 3623mm
Bedroom 5	2347mm x 3770mm
Bathroom	2726mm x 2400mm

N.B. All dimensions shown are maximum structural dimensions and do not include plaster finish. CGI shows typical Oakworth house. Seddon Homes pursues a policy of continuous improvement. So whilst every effort has been made to ensure that this information is correct, it is intended only as a guide and the company reserves the right to alter the specification as necessary and without prior notice. Please note that the layout of some homes may be the reverse of that shown here. Specific properties may also differ from this picture in respect of window positioning, brick colour and other design details including no garage, so please check with the Sales Advisor if clarification is required. This does not constitute or form any part of a contract or sale.