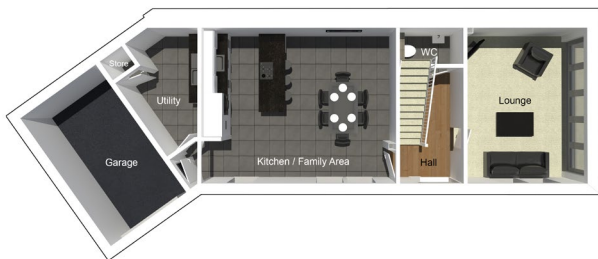


# The Croston

4 bedroom detached house with attached single garage



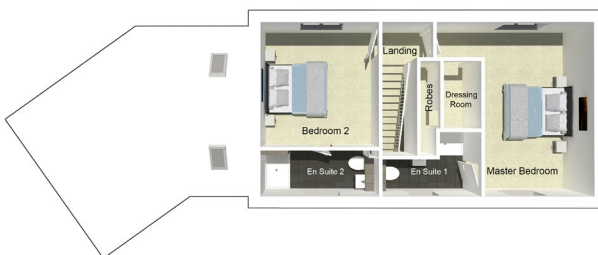
## Ground floor

Lounge	3898mm x 5073mm
Kitchen/Family Area	6329mm x 5073mm
Utility	3266mm x 3787mm
WC	2080mm x 1200mm
Garage	4960mm x 5030mm



## First floor

Bedroom 3	3998mm x 3168mm
Dressing Room	1523mm x 1830mm
Bedroom 4	3433mm x 5073mm
Bathroom	2400mm x 1830mm



## Second floor

Master Bedroom	3188mm x 5073mm
En Suite 1	2890mm x 1890mm
Dressing Room	1785mm x 1983mm
Bedroom 2	3458mm x 3643mm
En Suite 2	3458mm x 1355mm

N.B. All dimensions shown are maximum structural dimensions and do not include plaster finish. CGI shows typical Croston house. Seddon Homes pursues a policy of continuous improvement. So whilst every effort has been made to ensure that this information is correct, it is intended only as a guide and the company reserves the right to alter the specification as necessary and without prior notice. Please note that the layout of some homes may be the reverse of that shown here. Specific properties may also differ from this picture in respect of window positioning, brick colour and other design details including no garage, so please check with the Sales Advisor if clarification is required. This does not constitute or form any part of a contract or sale.

**Waterside** Egerton Road Belmont Bolton BL7 8BN Tel: 01204 811 480