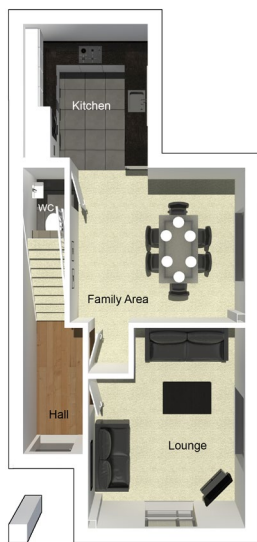


The Downham

3 bedroom detached house with parking spaces

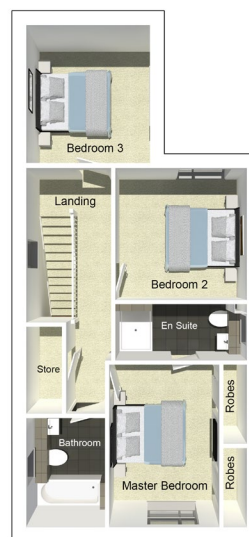


Ground floor



Lounge	3835mm x 4893mm
Kitchen	3048mm x 3273mm
Family Area	4280mm x 3793mm
WC	1030mm x 1748mm

First floor



Master Bedroom	3385mm x 3993mm
En Suite	3235mm x 1400mm
Bedroom 2	3235mm x 3243mm
Bedroom 3	3048mm x 3388mm
Bathroom	1950mm x 2693mm

N.B. All dimensions shown are maximum structural dimensions and do not include plaster finish. CGI shows typical Downham house. Seddon Homes pursues a policy of continuous improvement. So whilst every effort has been made to ensure that this information is correct, it is intended only as a guide and the company reserves the right to alter the specification as necessary and without prior notice. Please note that the layout of some homes may be the reverse of that shown here. Specific properties may also differ from this picture in respect of window positioning, brick colour and other design details including no garage, so please check with the Sales Advisor if clarification is required. This does not constitute or form any part of a contract or sale.

Waterside Egerton Road Belmont Bolton BL7 8BN Tel: 01204 811 480