

The Eccleston

4 bedroom detached house with parking spaces (pictured left)



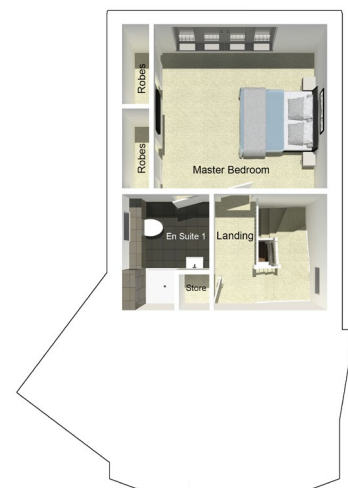
Ground floor



First floor



Second floor



Lounge	3725mm x 4735mm
Kitchen/Family Area	4830mm x 7201mm
WC	1775mm x 950mm

Bedroom 2	4375mm x 3800mm
Bedroom 3	4801mm x 3173mm
En Suite 2	3006mm x 1500mm
Bedroom 4	2325mm x 3780mm
Bathroom	2150mm x 2375mm

Master Bedroom	4735mm x 3800mm
En Suite 1	2055mm x 2693mm

N.B. All dimensions shown are maximum structural dimensions and do not include plaster finish. CGI shows typical Eccleston house. Seddon Homes pursues a policy of continuous improvement. So whilst every effort has been made to ensure that this information is correct, it is intended only as a guide and the company reserves the right to alter the specification as necessary and without prior notice. Please note that the layout of some homes may be the reverse of that shown here. Specific properties may also differ from this picture in respect of window positioning, brick colour and other design details including no garage, so please check with the Sales Advisor if clarification is required. This does not constitute or form any part of a contract or sale.

Waterside Egerton Road Belmont Bolton BL7 8BN Tel: 01204 811 480