

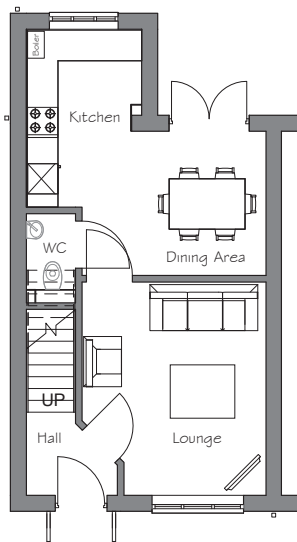
# The Fontwell

3 bedroom semi-detached house with parking space



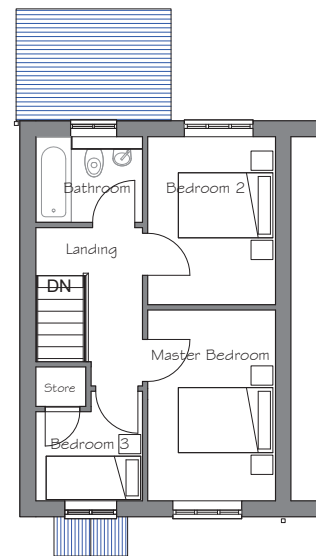
**Seddon Homes.co.uk**

Ground floor



Lounge	3668mm x 2895mm
Kitchen	2310mm x 3563mm
Dining Area	3668mm x 2895mm
WC	1002mm x 1800mm

First floor



Master Bedroom	2557mm x 3819mm
Bedroom 2	2557mm x 3366mm
Bedroom 3	2138mm x 2206mm
Bathroom	2138mm x 1730mm

N.B. All dimensions shown are maximum structural dimensions and do not include plaster finish. CGI shows typical Fontwell house. Seddon Homes pursues a policy of continuous improvement. So whilst every effort has been made to ensure that this information is correct, it is intended only as a guide and the company reserves the right to alter the specification as necessary and without prior notice. Please note that the layout of some homes may be the reverse of that shown here. Specific properties may also differ from this picture in respect of window positioning, brick colour and other design details including no garage, so please check with the Sales Advisor if clarification is required. This does not constitute or form any part of a contract or sale.

**Thornfield Grove** Sherbourne Road Middleton Manchester M24 6EH Tel: 01925 839504