

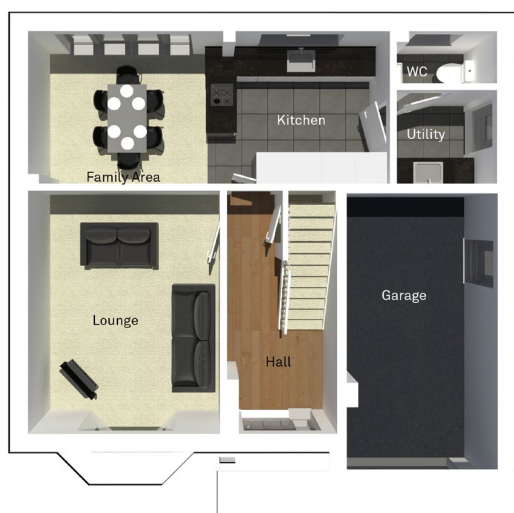
The Bourne

4 bedroom detached house with integral single garage



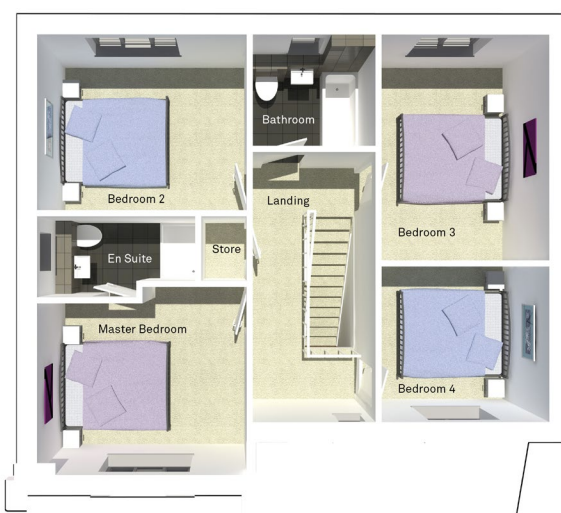
Seddon Homes.co.uk

Ground floor



Lounge	3610mm x 5075mm
Kitchen/Family Area	6785mm x 2878mm
Utility	1900mm x 1778mm
WC	1900mm x 1000mm
Garage	2888mm x 5583mm

First floor



Master Bedroom	3610mm x 3238mm
En Suite	2730mm x 1410mm
Bedroom 2	2898mm x 3885mm
Bedroom 3	3610mm x 3030mm
Bedroom 4	2898mm x 2688mm
Bathroom	2128mm x 1930mm

N.B. All dimensions shown are maximum structural dimensions and do not include plaster finish. CGI shows typical Bourne house. Seddon Homes pursues a policy of continuous improvement. So whilst every effort has been made to ensure that this information is correct, it is intended only as a guide and the company reserves the right to alter the specification as necessary and without prior notice. Please note that the layout of some homes may be the reverse of that shown here. Specific properties may also differ from this picture in respect of window positioning, brick colour and other design details including no garage, so please check with the Sales Advisor if clarification is required. This does not constitute or form any part of a contract or sale.

Southbeck Earby Road Salterforth BB18 6SP Tel: 0845 241 1356