

# The Budworth

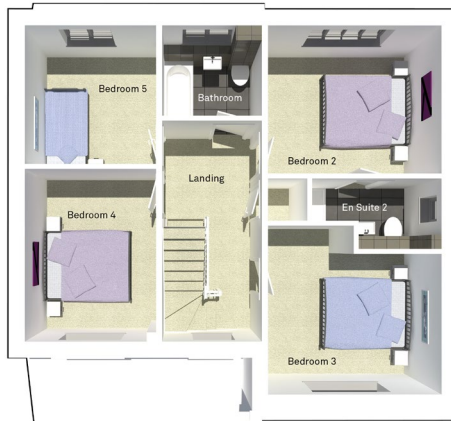
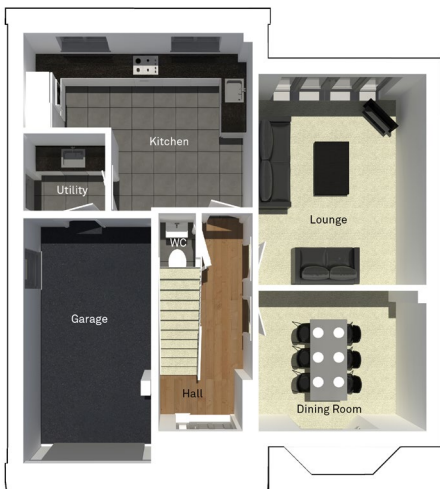
5 bedroom, 3 storey detached house with integral single garage



Ground floor

First floor

Second floor



Lounge	3725mm x 4668mm
Kitchen	5073mm x 4008mm
Dining Room	3725mm x 3588mm
Utility	1830mm x 1880mm
WC	1005mm x 1813mm
Garage	2823mm x 5583mm

Bedroom 2	3725mm x 3183mm
En Suite 2	2785mm x 1530mm
Bedroom 3	3725mm x 3623mm
Bedroom 4	2823mm x 3705mm
Bedroom 5	2823mm x 2980mm
Bathroom	2510mm x 1950mm

Master Bedroom	5975mm x 5891mm
En Suite 1	2848mm x 2499mm
Dressing Room	2848mm x 2004mm

N.B. All dimensions shown are maximum structural dimensions and do not include plaster finish. CGI shows typical Budworth house. Seddon Homes pursues a policy of continuous improvement. So whilst every effort has been made to ensure that this information is correct, it is intended only as a guide and the company reserves the right to alter the specification as necessary and without prior notice. Please note that the layout of some homes may be the reverse of that shown here. Specific properties may also differ from this picture in respect of window positioning, brick colour and other design details including no garage, so please check with the Sales Advisor if clarification is required. This does not constitute or form any part of a contract or sale.