

The Kelbrook



4 bedroom, 3 storey semi-detached house with detached single garage
(P49 has parking space instead of garage)



Seddon Homes.co.uk

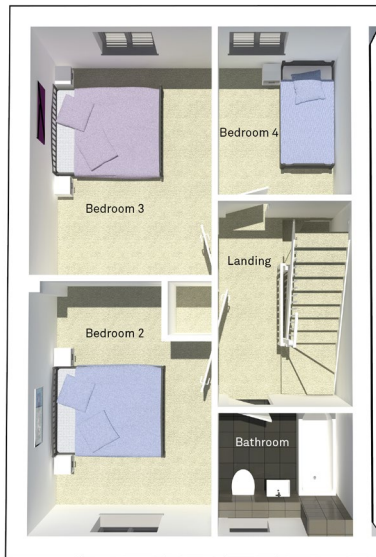
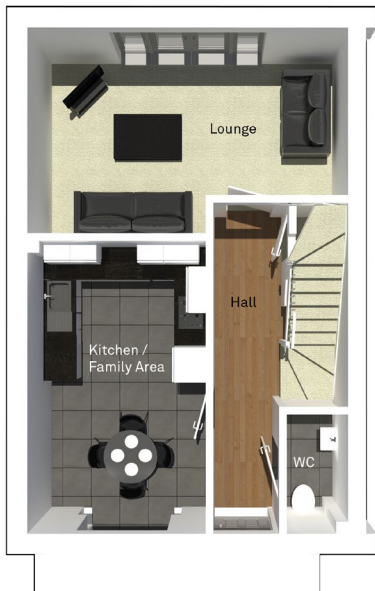
Ground floor



First floor



Second floor



Lounge	5436mm x 3494mm
Kitchen/Family Area	3035mm x 5529mm
WC	1061mm x 2038mm

Bedroom 2	3088mm x 4263mm
Bedroom 3	3088mm x 4223mm
Bedroom 4	2273mm x 2877mm
Bathroom	2273mm x 2063mm

Master Bedroom	4265mm x 5776mm
En Suite	1786mm x 2897mm

N.B. All dimensions shown are maximum structural dimensions and do not include plaster finish. CGI shows typical Kelbrook house. Seddon Homes pursues a policy of continuous improvement. So whilst every effort has been made to ensure that this information is correct, it is intended only as a guide and the company reserves the right to alter the specification as necessary and without prior notice. Please note that the layout of some homes may be the reverse of that shown here. Specific properties may also differ from this picture in respect of window positioning, brick colour and other design details including no garage, so please check with the Sales Advisor if clarification is required. This does not constitute or form any part of a contract or sale.