

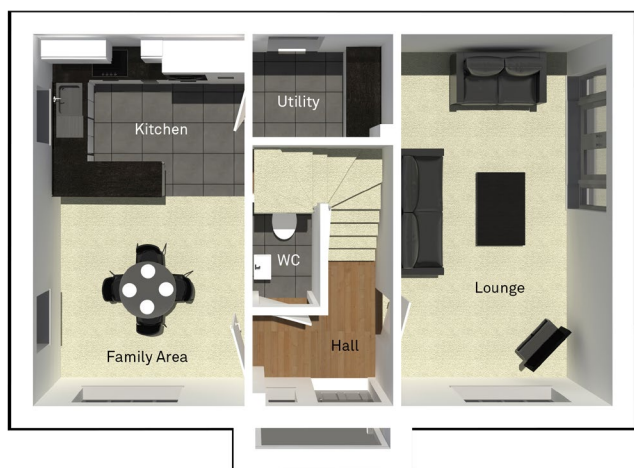
The Mearley

4 bedroom detached house with detached single garage



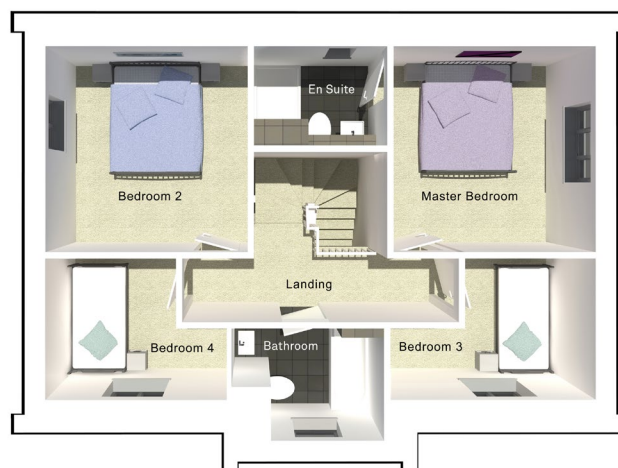
Seddon Homes.co.uk

Ground floor



Lounge	3345mm x 5860mm
Kitchen/Family Area	3345mm x 5860mm
Utility	2233mm x 1642mm
WC	1088mm x 1650mm

First floor



Master Bedroom	3370mm x 3426mm
En Suite	2233mm x 1667mm
Bedroom 2	3370mm x 3426mm
Bedroom 3	3413mm x 2360mm
Bedroom 4	3311mm x 2360mm
Bathroom	2249mm x 1880mm

N.B. All dimensions shown are maximum structural dimensions and do not include plaster finish. CGI shows typical Mearley house. Seddon Homes pursues a policy of continuous improvement. So whilst every effort has been made to ensure that this information is correct, it is intended only as a guide and the company reserves the right to alter the specification as necessary and without prior notice. Please note that the layout of some homes may be the reverse of that shown here. Specific properties may also differ from this picture in respect of window positioning, brick colour and other design details including no garage, so please check with the Sales Advisor if clarification is required. This does not constitute or form any part of a contract or sale.