

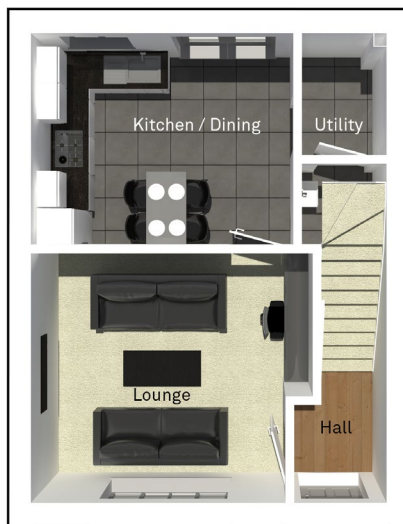
# The Shelley

3 bedroom mews house with parking space



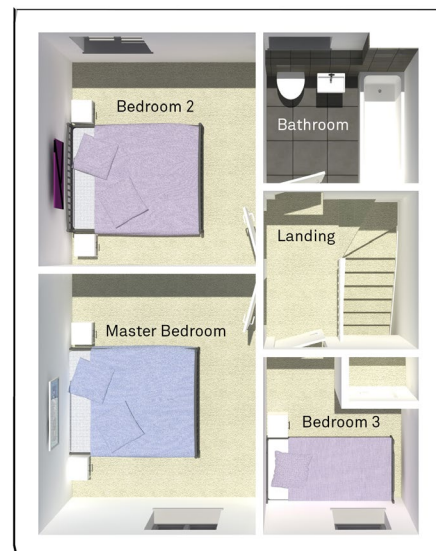
**Seddon Homes.co.uk**

Ground floor



Lounge	4208mm x 3698mm
Kitchen/Dining	3290mm x 3187mm
Utility	1290mm x 1832mm
WC	1290mm x 1455mm

First floor



Master Bedroom	3045mm x 3642mm
Bedroom 2	3045mm x 3268mm
Bedroom 3	2190mm x 2492mm
Bathroom	2190mm x 2118mm

N.B. All dimensions shown are maximum structural dimensions and do not include plaster finish. CGI shows typical Shelley house. Seddon Homes pursues a policy of continuous improvement. So whilst every effort has been made to ensure that this information is correct, it is intended only as a guide and the company reserves the right to alter the specification as necessary and without prior notice. Please note that the layout of some homes may be the reverse of that shown here. Specific properties may also differ from this picture in respect of window positioning, brick colour and other design details including no garage, so please check with the Sales Advisor if clarification is required. This does not constitute or form any part of a contract or sale.

**Southbeck** Earby Road Salterforth BB18 6SP Tel: 0845 241 1356