

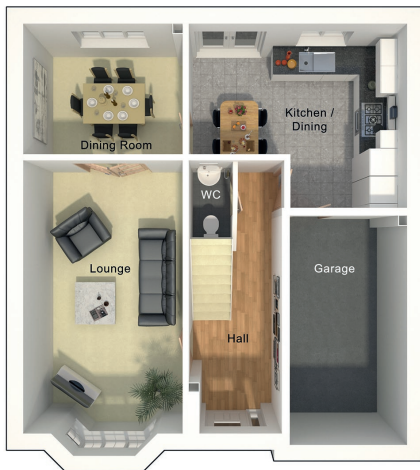
The Brearley

4 bedroom detached house with integral single garage



Seddon Homes.co.uk

Ground floor



Lounge	3385mm x 6261mm
Kitchen/Dining	4610mm x 3963mm
Dining Room	3385mm x 2782mm
WC	967mm x 1840mm
Garage	2485mm x 4835mm

First floor



Master Bedroom	3421mm x 5416mm
En Suite 1	2115mm x 1800mm
Bedroom 2	3569mm x 3195mm
En Suite 2	2429mm x 1431mm
Bedroom 3	3400mm x 2997mm
Bedroom 4	2305mm x 3652mm
Bathroom	2255mm x 2547mm

N.B. All dimensions shown are maximum structural dimensions and do not include plaster finish. CGI shows typical Brearley house. Seddon Homes pursues a policy of continuous improvement. So whilst every effort has been made to ensure that this information is correct, it is intended only as a guide and the company reserves the right to alter the specification as necessary and without prior notice. Please note that the layout of some homes may be the reverse of that shown here. Specific properties may also differ from this picture in respect of window positioning, brick colour and other design details including no garage, so please check with the Sales Advisor if clarification is required. This does not constitute or form any part of a contract or sale.

The Covey Off Kestrel Close Congleton Cheshire CW12 3FB Tel: 01260 289633