

The Shelley

Plots 22-24
3 bedroom mews home
with parking space



Prices from
£128,415
represents a 70%
shared equity
purchase.
Full price £183,450
T's & C's apply.
Ask for details.

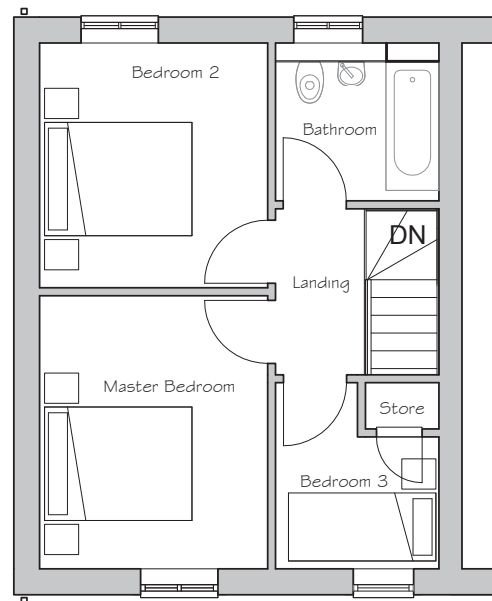
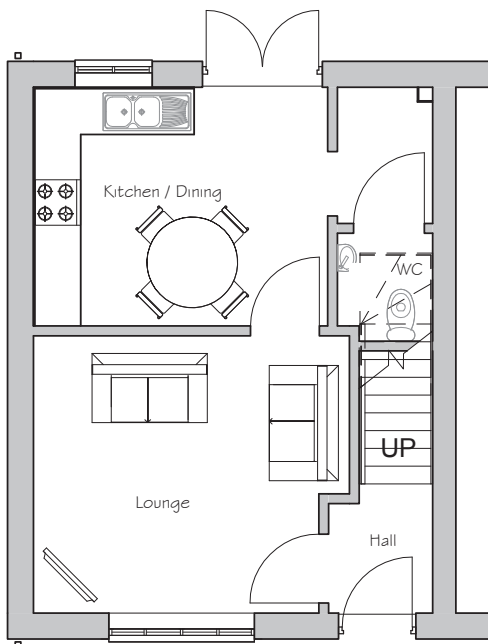
Photograph taken on another Seddon Homes development, external elevation and finishing materials may vary.

Ground floor

Lounge	4208mm x 3698mm
Kitchen/Dining	3290mm x 3187mm
Utility	1290mm x 1832mm
WC	1290mm x 1455mm

First floor

Master Bedroom	3045mm x 3642mm
Bedroom 2	3045mm x 3268mm
Bedroom 3	2190mm x 2492mm
Bathroom	2109mm x 2118mm



N.B. All dimensions shown are maximum structural dimensions and do not include plaster finish.