

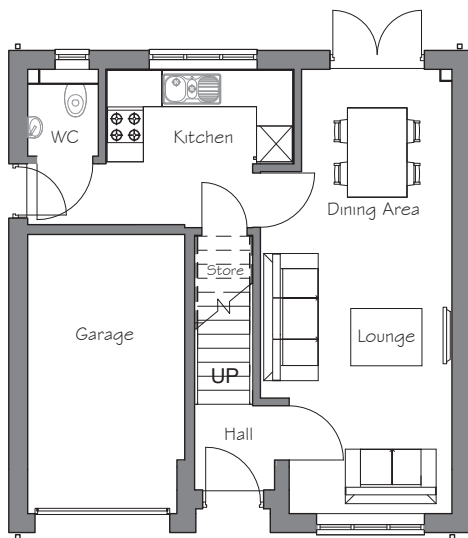
# The York

3 bedroom detached house with integral single garage



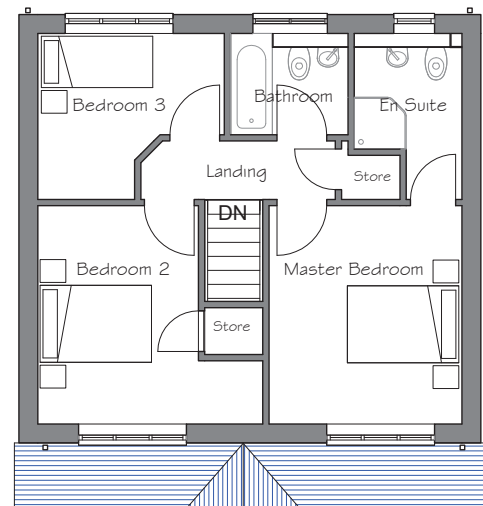
**Seddon Homes.co.uk**

Ground floor



Lounge	3243mm x 4800mm
Kitchen	3180mm x 2685mm
Dining	2533mm x 2685mm
WC	1215mm x 1485mm
Garage	2650mm x 4685mm

First floor



Master Bedroom	3268mm x 3694mm
En Suite	1838mm x 2816mm
Bedroom 2	2725mm x 3694mm
Bedroom 3	3160mm x 2816mm
Bathroom	2000mm x 1730mm

N.B. All dimensions shown are maximum structural dimensions and do not include plaster finish. CGI shows typical York house. Seddon Homes pursues a policy of continuous improvement. So whilst every effort has been made to ensure that this information is correct, it is intended only as a guide and the company reserves the right to alter the specification as necessary and without prior notice. Please note that the layout of some homes may be the reverse of that shown here. Specific properties may also differ from this picture in respect of window positioning, brick colour and other design details including no garage, so please check with the Sales Advisor if clarification is required. This does not constitute or form any part of a contract or sale.

**Thornfield Grove** Sherbourne Road Middleton Manchester M24 6EH Tel: 01925 839504